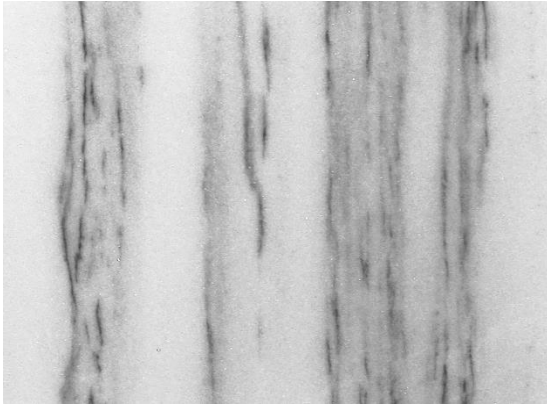


Specification and Technical Information

MONTE VISTA CHEVEDALE



Material Type: Marble
Available Sizes: *Contact us*
Thickness: *Contact us*
Finishes: Flamed, Honed, Polished, Brushed

Calcium carbonate content (CaCO ₃)	96,4 – 98,6 %
Density UNI EN 1936: 2001	2710 Kg/m ³
Open porosity UNI EN 1936: 2001	0,4 %
Water absorption at atmospheric pressure UNI EN 13755: 2002	0,1 %
Water absorption coefficient by capillarity UNI EN 1925: 2000	1,090 g/m ² /s ^{0,5}
Compressive strength UNI EN 1926: 2000	R _m = 89 MPa
Compressive strength after freeze/thaw cycles UNI EN 12371: 2003	R _{mg} = 93 MPa
Flexural strength UNI EN 12372: 2001	R _{tfm} = 14,6 MPa
Flexural strength after freeze/thaw cycles UNI EN 12371: 2003	R _{tfmg} = 13,4 MPa
Resistance to abrasion UNI EN 1341: 2003 Attachment C	23,9 mm
Resistance to sliding friction UNI EN 1341: Attachment D	59 USRV
Electrical resistance dry	> 1.000 Megohm
Electrical resistance wet	15 Megohm